

# Verify your skills with the Moodle Educator Qualification program



Are you an educator or a learning and development professional?



Have you used Moodle LMS or Moodle Workplace™ for at least a year?



Have you completed educator programs on Moodle Academy or training with a Moodle Certified Partner or Service Provider?

**If so, then consider verifying your skills with the Moodle Educator Qualification (MEQ) program.**

MEQ is based on the European Framework for Digital Competences for Educators (DigCompEdu). DigCompEdu articulates 22 competences in six areas, and MEQ has one course for each area: Professional Engagement, Digital Resources, Teaching and Learning, Assessment, Empowering Learners, Facilitating Learners' Digital Competence.

# Demonstrate digital competences using Moodle

The MEQ enables you to demonstrate your expertise in teaching or creating learning development programs with Moodle and obtain official Qualification directly from Moodle Pty Ltd.

The full MEQ consists of 22 competences, based on the European Framework for the Digital Competence for Educators (DigCompEdu), organised in a six-course qualification program.

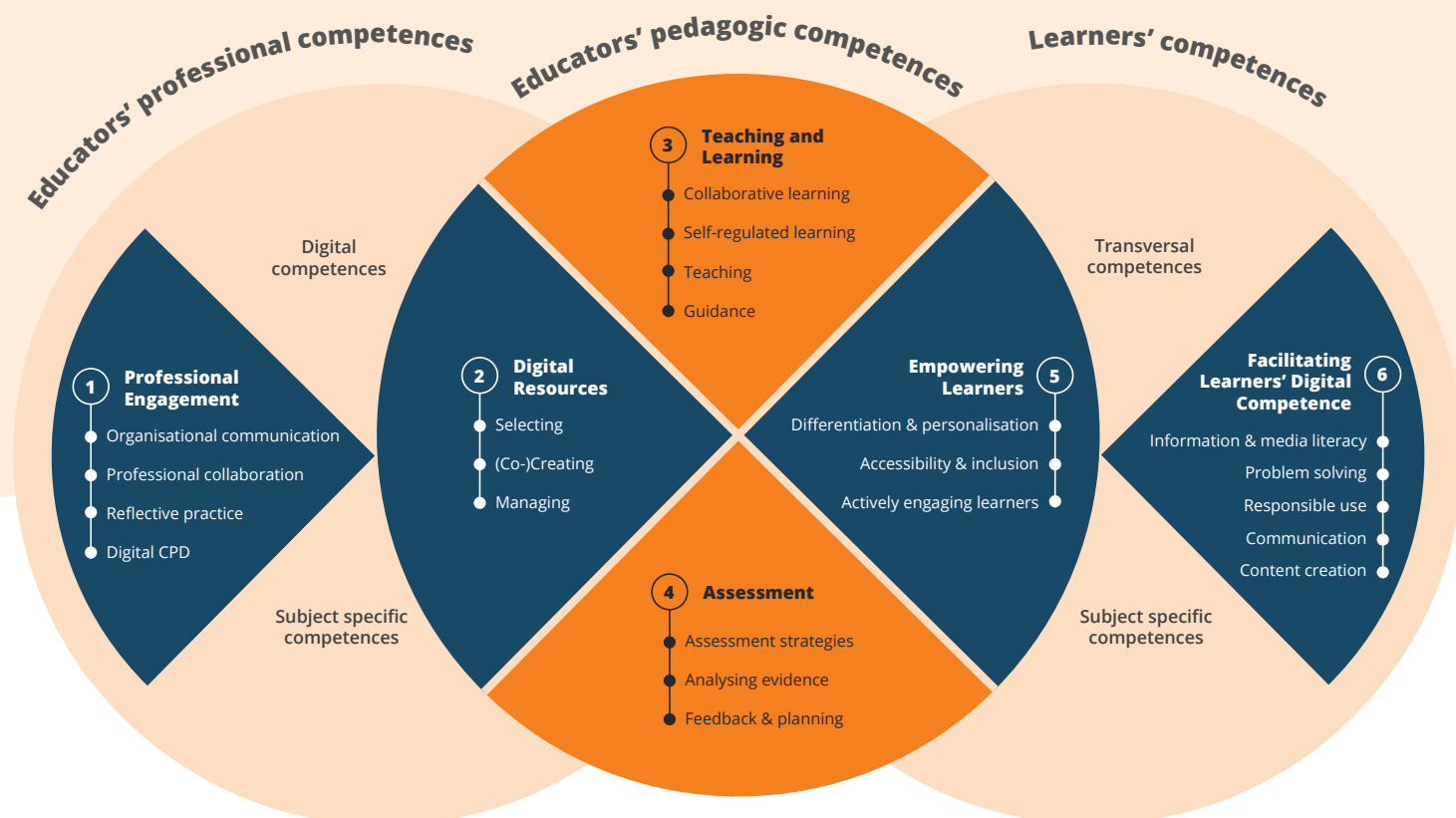


Image courtesy of Redecker, C. European Framework for the Digital Competence of Educators: DigCompEdu. Punie, Y. (ed). EUR 28775 EN. Publications Office of the European Union, Luxembourg, 2017.  
Note: Source image colours have been modified by Moodle

## Advance your career with credentials

- Ensure that your qualification is based on widely accepted and rigorous educational standards.
- Enhance your professional reputation with official recognition of your ability to manage and deliver high-quality Moodle courses.
- Earn a badge for each of the six comprehensive courses, culminating in the prestigious Moodle Educator Qualification certificate.

## Advance the quality of education you provide

- Improved Course Quality: Utilise the skills and knowledge gained from the MEQ to enhance the quality of your courses, benefiting your learners directly.
- Organisational Impact: Contribute to the overall quality of your organisation's education programs by implementing best practices and advanced Moodle functionalities.

# 22 digital competences

## MEQ is designed around the 22 digital competences of the DigCompEdu, adapted to a Moodle Environment:

### 01. Professional engagement course

*Organisational communication* - Use a variety of communication methods to enhance communication within their organisation.

*Professional collaboration* - Collaborate and share resources.

*Reflective practice* - Improve your practice through critical reflection and feedback.

*Digital CPD* - Engage in continuous professional development using sites such as MoodleNet.

### 02. Digital resources course

*Selecting digital resources* - Locate, assess and select appropriate open content such as from MoodleNet.

*Creating and modifying digital resources* - Create and share appropriately licensed open content.

*Managing, protecting and sharing digital resources* - Respect and correctly attribute open content and apply privacy and copyright rules.

### 03. Teaching and Learning course

*Teaching* - Plan for, implement, experiment with and develop use of Moodle to enhance your teaching.

*Guidance* - Enhance interaction with learners, offering timely, targeted guidance to learners, exploring new ways to support them.

*Collaborative learning* - Foster and enhance learner collaboration and knowledge creation.

*Self regulated learning* - Empower learners to plan, monitor and reflect on their own learning, sharing insights and creative solutions to problems.

### 04. Assessment course

*Assessment strategies* - Use summative and formative approaches appropriate to your learners.

*Analysing evidence* - Track and support learner progress by informed use of activity and course reporting.

*Feedback and planning* - Provide timely, targeted support with a range of feedback options appropriate to your learners.

### 05. Empowering learners course

*Accessibility and inclusion* - Create accessible and mobile-friendly courses to ensure inclusion.

*Differentiation and personalisation* - Create personalised and adaptive learning paths to meet learners' diverse needs.

*Actively engaging learners* - Foster learner independence and creativity by using a range of strategies to motivate and reward learner success.

### 06. Facilitating learners' digital competence course

*Information and media literacy* - Guide learners to source and critically evaluate online materials.

*Digital communication and collaboration* - Encourage learner communication, collaboration and civic participation.

*Digital content creation* - Provide opportunities for learners to co-create content relevant to them.

*Responsible use* - Guide learners to be safe online.

*Digital problem solving* - Challenge learners with technical problem-solving activities and scenarios.

When an MEQ course is successfully completed, candidates receive a badge, and when all badges are acquired, candidates obtain the Moodle Educator Qualification certificate (MEQ).

MEQ gives candidates the opportunity to further their professional development, learning about all the possibilities offered by Moodle regarding blended, mobile and online education. MEQ is based on case studies and the use of Moodle to support school students, adults in higher education and workplace training.

✓ **6 courses**    ✓ **6 badges**    ✓ **1 certificate**

The MEQ is available through Moodle Partners who have been trained and certified by Moodle HQ to facilitate the courses.

Over the six courses you'll explore six areas of expertise covering in total twenty-two digital competences, all of which you approach as a Moodle using educator.

You can take just one course and obtain a single badge, or complete the full program to obtain the MEQ certificate.



# Success criteria



Assessment in MEQ courses consists of one quiz per competence, one scenario-based quiz and one written assignment.

To successfully complete any of the MEQ courses, candidates need to pass each quiz ('Test your understanding' and scenario-based quizzes) with a minimum score of 80% and reach level B2 (Expert) in the written assignment.

MEQ written assignment is assessed with a rubric based on the DigCompEdu rubric and linked to the Common European Framework of Reference for Languages (CEFR):

- A1 (Newcomer)
- A2 (Explorer)
- B1 (User)
- B2 (Expert)
- C1 (Leader)
- C2 (Pioneer)

**Candidates have unlimited attempts for the 'Test your understanding' quizzes, two attempts for the scenario-based quiz and they may submit and update their written assignment twice, based on facilitator feedback.**



**The cost of the full MEQ certificate is €950.**

## Advance your career today

To register and find out more, contact Certified Premium Partner **Enovation** at [meq@enovation.ie](mailto:meq@enovation.ie)

